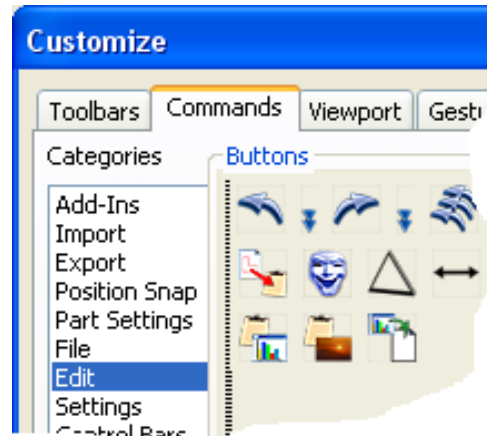


KeyCreator Lesson KC7302 Hot Keys and Mouse Buttons

In lesson KC7301 you learned how to customize toolbars to simplify your work.

An equally important customizing technique is the creation of custom accelerator keys to simplify the use of common tools.

We can also use these accelerator keys (Also known as Short Cut Keys or Hot Keys.) for other purposes.



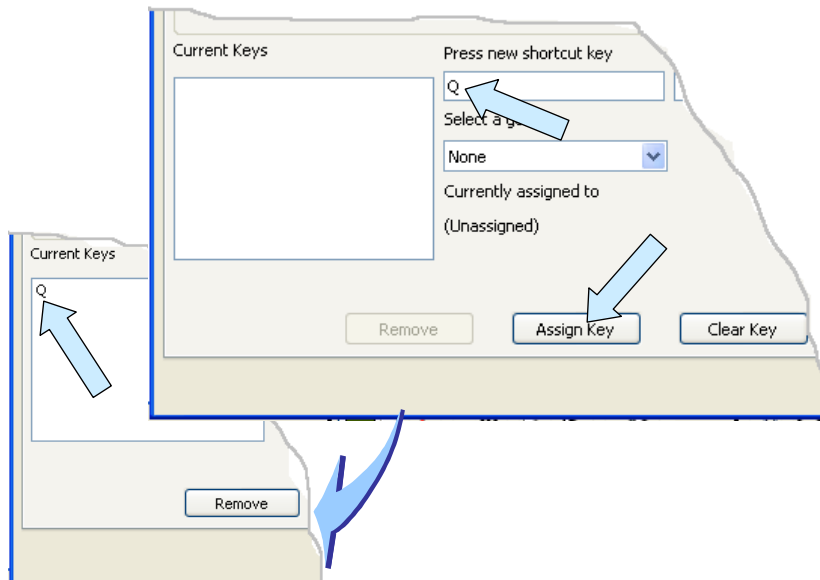
Suppose you want to toggle on the toolbar that you just created by using a Shortcut Key.

Click on the T18 Button in the Buttons Field. Then, click on the Press New Shortcut Key Field in the lower section of the Customize Dialog Box.

Then hit the “Q” Key on your Keyboard. (You could use any Key you wish here. I’m just using the “Q” Key because it is not currently assigned to anything.)

Then, click on the ASSIGN KEY Button at the bottom of the Dialog Box.

Notice that the Key is now entered in the Current Keys Field at the lower, left corner of the Dialog Box.



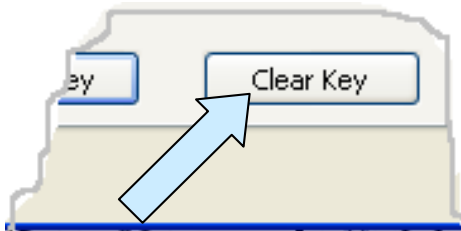
The Remove Button becomes active.

If you ever want to remove a key assignment, you can select the key in this Dialog Box and then click on the Remove Button.

If you now close the Customize Dialog Box and then close your toolbar, you can redisplay the toolbar by hitting the “Q” Key.

You can just as easily assign Hot Keys to your favorite functions using the same procedure. Again, just as when we populated our toolbar, you no longer have to scroll through an endless list of Icons to find the function that you want to use. Just click on a category and all of the Icons associated with that particular category will appear in the Buttons Field. Then, click on the desired Button and assign your Hot Key.

Remember that the basic rules for assigning Hot Keys still hold true.



If you type the wrong key you must use the Clear Key Button to undo a mistake prior to assigning the key. (You cannot use the “DELETE” Key on the keyboard since this is an assignable key!)

You have to use the Remove Button to eliminate a key assignment after you have actually hit the Assign Button. (This is equivalent to the “Clear All” Button that we used in the Accelerator Key Dialog Box in previous CADKEY releases.)



You can use almost any character key on the keyboard, including the numeric keypad keys, for assignments. You can also combine a system key such as “ALT”, “SHIFT”, or “CTRL” or combinations of these keys with the character keys to give you more options.

If you try to use a key that is already assigned, a message will appear in the area under the Key Field in the Dialog Box indicating that the key is already in use. This warning message does not draw your attention as well as the warning that appeared in previous CADKEY releases, so pay close attention.

MOUSE BUTTONS

Assigning mouse Buttons is also handled in the Commands Tab of the Customize Dialog Box. You'll see the options next to the shortcut key entry field.



Remember that this was a separate Option under the TOOLS Pulldown Menu in CADKEY19 and previous releases.

If you click on the VIEWPORT Tab at the top of the Dialog Box, you will get additional Mouse options.

