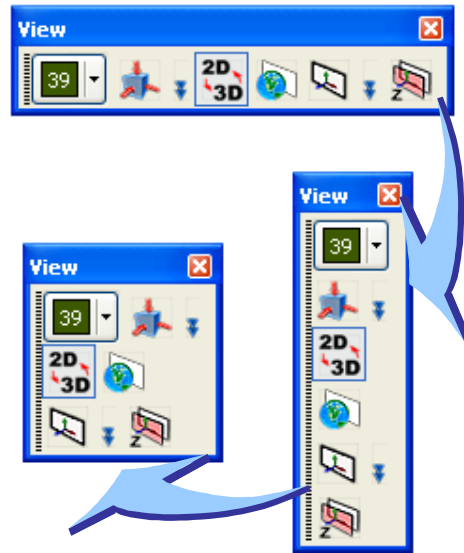


KeyCreator Lesson KC7301 Toolbars

Creating custom toolbars gives you the opportunity to make KeyCreator match the way that you like to work.

You can group commonly used tools together to simplify your work and position the toolbars around all four edges of the screen and even float them in the viewport area.



Customizing the interface is very easy. Let's drag the VIEW TOOLBAR out into the viewport.

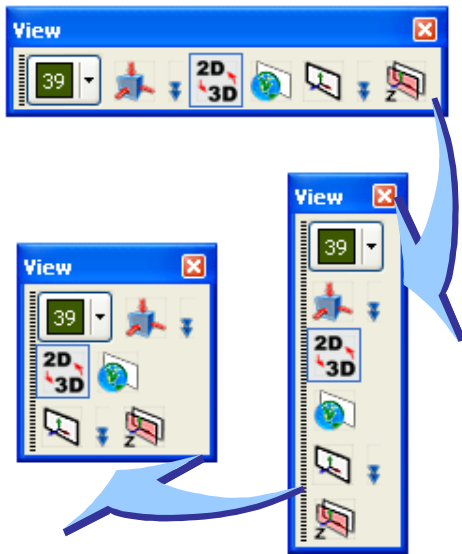
To do this, click on a blank area of the toolbar, and keep the mouse button depressed as you drag the toolbar into the viewport.

NOTE: I've shown the toolbar docked at the bottom of the screen. Your toolbar may be docked at the top.

When the toolbar is dropped in the viewport in an undocked position, you will see a header bar appear at the top of it with a label "VIEW."



View is the name that was given to this toolbar when it was created. You will see in a few minutes that you can also assign names to toolbars that you create.



Move the cursor over the right edge of the floating toolbar so that a double-headed arrow appears.

Click on the edge and drag the mouse to the left. Notice that as you drag the mouse, the toolbar reorders itself into different layouts.

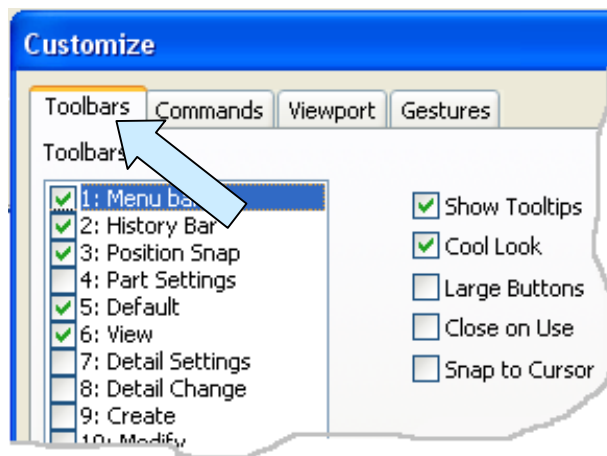
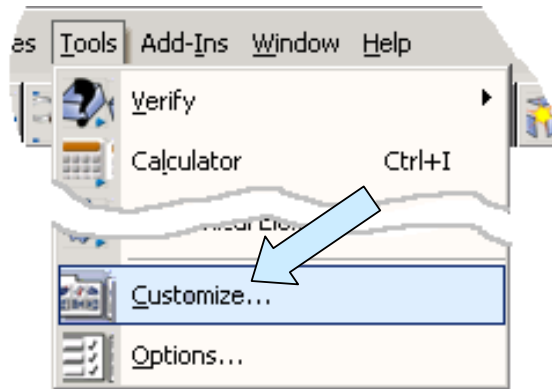
You can continue until you have one, long, vertical configuration or a range of palette shapes.

You can also drag the toolbar over to the far right edge of the screen and it will dock on the right margin of the application.

Let's assume that you want to make your own, custom toolbar that contains a selection of icons. That's also extremely simple.

First, click on the TOOLS Pulldown menu at the top of the screen.

Then, click on CUSTOMIZE.



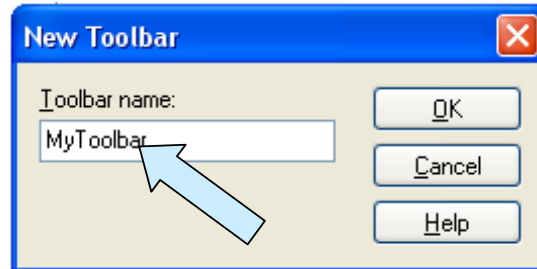
A Dialog Box appears. When the TOOLBARS Tab is selected, the box will look like the picture to the left.

Notice that a list of toolbars is shown in the field box. A checkmark in front of the toolbar name means that the toolbar is currently displayed. (You can turn toolbars on and off in this box by simply clicking on the box in front of the toolbar name to toggle the display.)



To make a new toolbar, simply click on the NEW Button in the top right area of the Dialog Box.

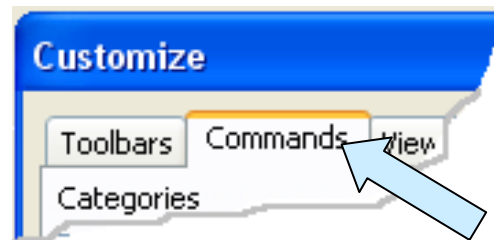
A small Dialog Box appears. Type a name for your toolbar in the name field and then click on the OK Button.



A small, square toolbar appears in the upper, left area of the screen.

Click on this toolbar and drag it into the upper, right area of the viewport.

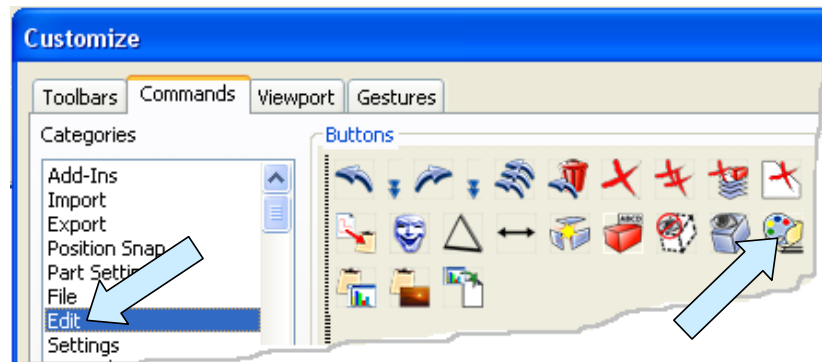
Now, click on the COMMANDS Button at the top of the Customize Dialog Box. You are now ready to populate your toolbar.



For Users of CADKEY 19 and earlier versions, remember how frustrating it was to scroll through the endless list of Icons in the old Accelerator Key Dialog Box to assign a Hot Key? Also, remember how you had to click on a tool Icon to make it appear on the History Line so that you could then drag it from there to the top toolbar on the screen? Well rejoice, those frustrating days are over!

Let's click on the EDIT in the Categories List.

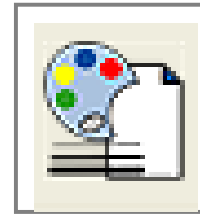
Notice that just the Icons in this group appear in the Buttons Field. Now, position the cursor on the CHANGE ATTRIBUTE Icon.





Depress the LEFT MOUSE BUTTON and drag the Icon onto your new toolbar that you placed in the upper right area of the viewport.

As you let go of the Icon on the toolbar, it snaps by itself into place!



Next, click on the SET ATTRIBUTE Icon and drag it to your toolbar.

As you let go of it, it will snap into place next to the first Icon. (The toolbar automatically increases in size to accept the Icon.) NOTE: If you place the new Icon overlapping the first Icon and slightly to the right as you place it, it will position itself as the second Icon.

If you overlap to the left, it will become the first Icon. You can also drag the Icon on the toolbar after it is placed to reposition it. If you drop the Icon out in space away from the toolbar, it will simply auto create a new toolbar and position itself on this toolbar.

Also, if you just skip the create toolbar step and simply select an Icon and drop it in a blank area of the screen, a small toolbar will be created to hold it!

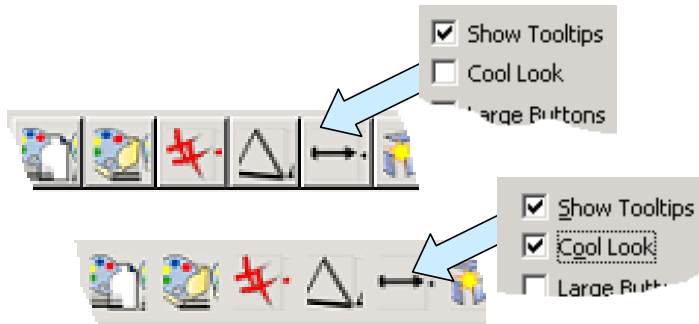
Notice that this toolbar is starting out as a horizontal one. At this point, or at any time in the future, you can drag the vertical edge of the toolbar inward to reorient it as a vertical toolbar.

You can continue populating the toolbar with additional Icons from the categories list. If you click on the Toolbars Button at the top of the Customize Dialog Box, you will see that your toolbar has been added to the list of toolbars.

Click on the TOOLBARS Tab at the top of the Dialog Box and look at the top, middle area. You will see several options. I've illustrated them to the right.

- Show Tooltips
- Cool Look
- Large Buttons
- Close on Use
- Snap to Cursor

If there is a check in front of the Show Tool Tips Option, the standard Windows Tool Tips will appear when you pause with the cursor over an Icon. Click to remove this check if you don't want these tips.



The Cool Look Option affects the appearance of the Icons.

With a check in this box the Icons on the Toolbars will blend together without defining borders.

Click to remove the check and your Icons will be well-defined, like they were in previous CADKEY releases.

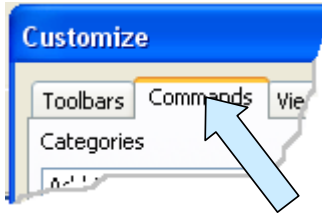
While the Cool Look might be “cool”, defined borders for graphics such as Icons definitely reduce eyestrain and increase productivity. However, once again, the beauty of KEYCREATOR is that you can customize it to suit your own personal preference!

The Large Buttons Option gives you oversize Icons that are easier to decipher. Unfortunately, they take up an inordinate amount of real estate, so in most cases you probably won't want to exercise this option. The exception is when you are working on a very large monitor at an extremely high resolution. In this case, the small Icons will be hard to see, so using the large Icons solves the problem.

If you place a check on the Close on Use Option, a floating toolbar will disappear from the display when you click on any Icon displayed on the toolbar.

If a floating toolbar is not displayed and you have the Snap to Cursor Option checked, accessing the toolbar (By using the assigned Hot Key) will make the toolbar appear at the current cursor position!

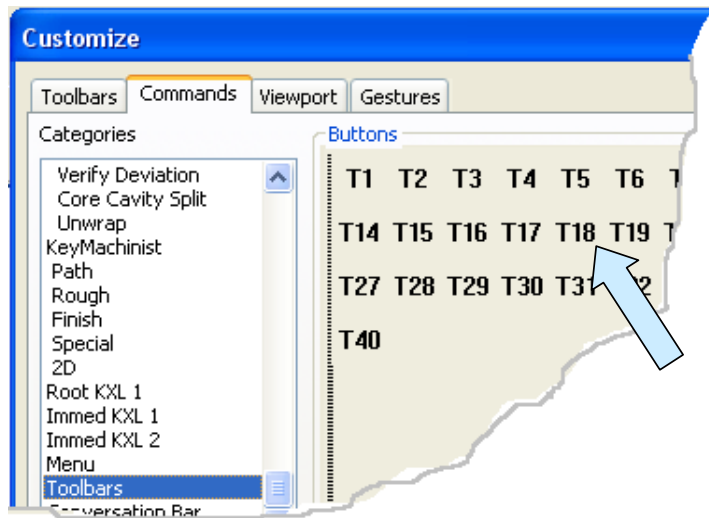
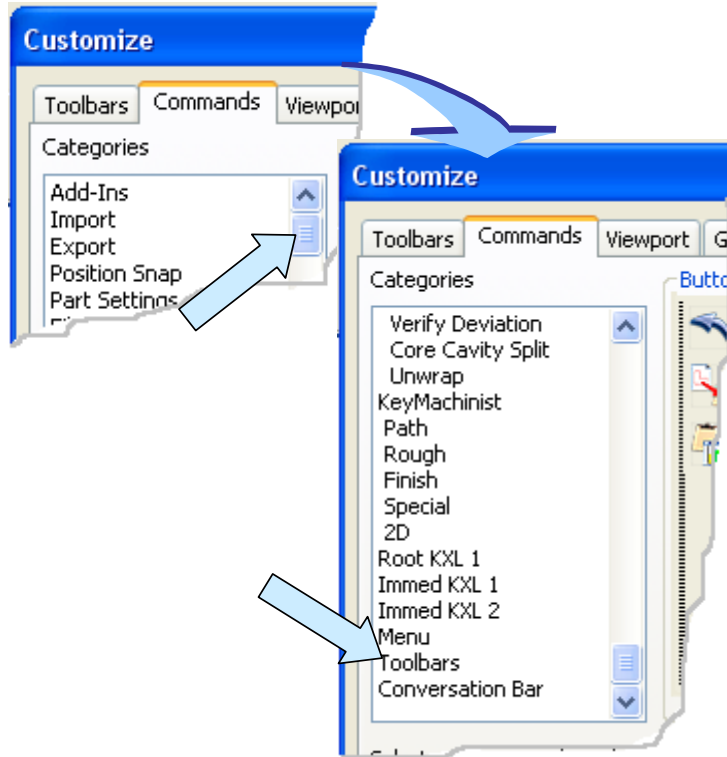
NOTE: If you do not have the Customize Commands Dialog Box active, you cannot simply click on a toolbar Icon and move it. You must depress the ALT Key while you click on the Icon to move it!



Let's look at one more neat new toolbar feature. Click on the Commands Button at the top of the Customize Dialog Box.

Now, click on the Slider Bar to the right of the Categories Field and drag it all the way to the bottom.

Next, click on the Toolbars Category.



Notice that the Buttons Field in the Customize Dialog Box displays 40 Toolbar Buttons.

Since the toolbar that we created was number 18, click on the T18 Button.



Notice that the Description Field in the Customize Dialog Box indicates that the action associated with this Button is to Toggle the Display of Toolbar 17.

You can click on the T18 Button and drag it up to one of the default toolbars that populate the top of your screen.

Now, close the Customize Dialog Box. Then, click on the “X” in the top, right corner of your small toolbar to remove it from the display. Now click on the T18 Button (You just dragged it onto one of the top toolbars.) you will see your small toolbar reappear!

So one neat option that you can take advantage of is to populate a toolbar somewhere on your display with the toggle buttons for any extra toolbars that you don’t always want visible. This could save valuable screen real estate!