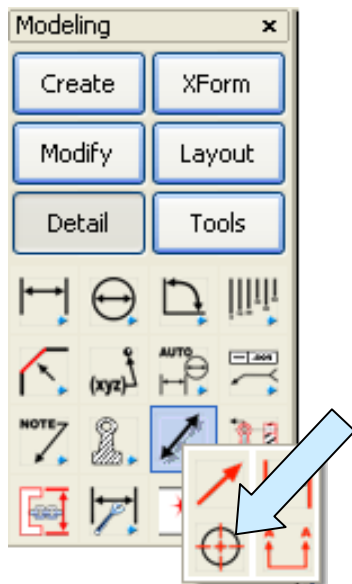
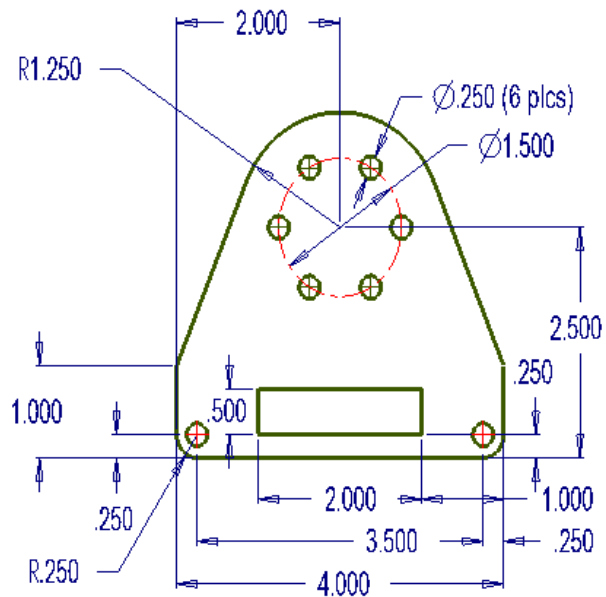
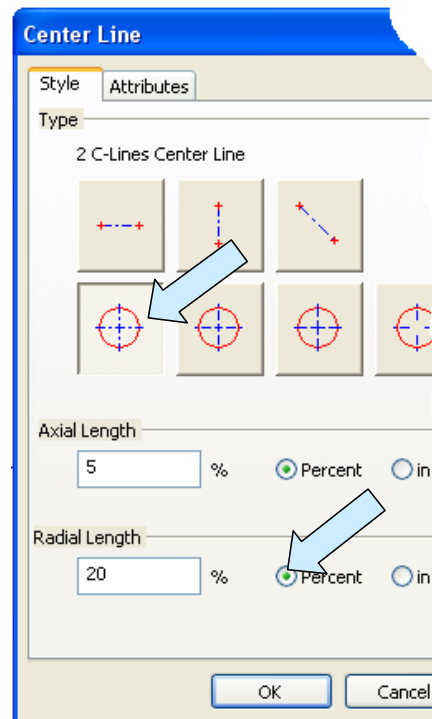


KeyCreator Lesson KC4601 Detailing a Fixture Plate

In this lesson we are going to detail the fixture plate created in lesson KC4501. So start by opening the “KC4501” file that you saved at the end of that lesson.



We'll start by clicking on the CENTERLINE Icon.

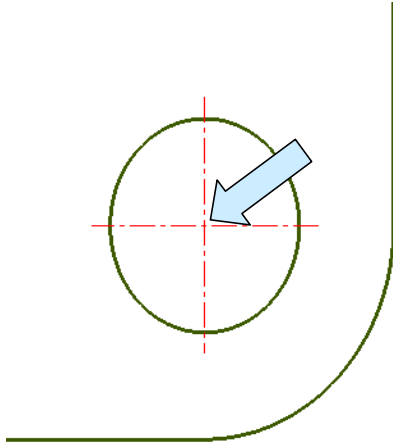


A Dialog Box appears.

Select a style for the radial centerlines. I've selected style number 1.

Then select either the percentage length or exact length option. (This is the amount that the centerline extends past the circle. The percentage is based on the circle radius.) Click on the OK Button.

Now click on the two small circles at the bottom corners of the part.

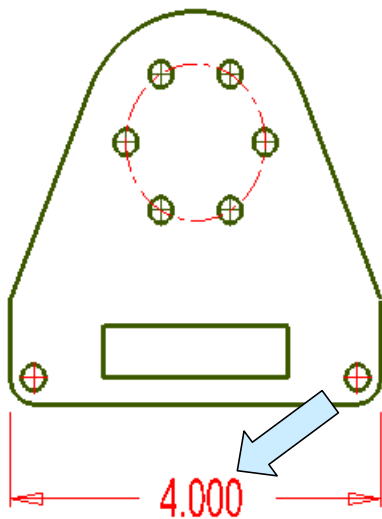
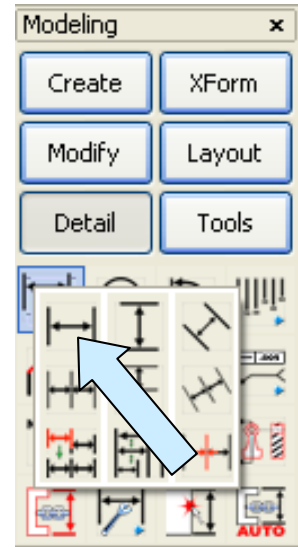


Centerlines are created for each circle. (Note: The centerlines made with this tool are tagged to the circles. If you move a circle, the centerlines will move with it.)

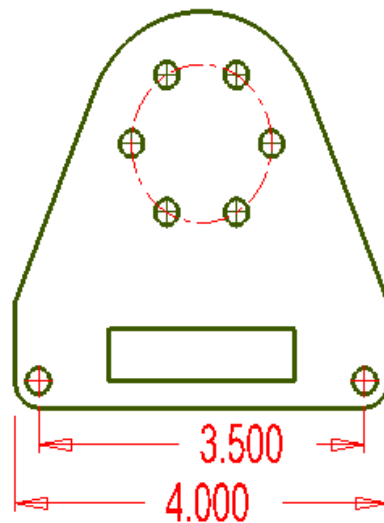
Let's place some basic dimensions on the plate. We'll start by using the traditional dedicated dimension tools to place a few dimensions. Then, I'll show you a much faster way to detail the part using the relatively new Quick Dimension Tool.

Click on the HORIZONTAL LINEAR DIMENSION Icon.

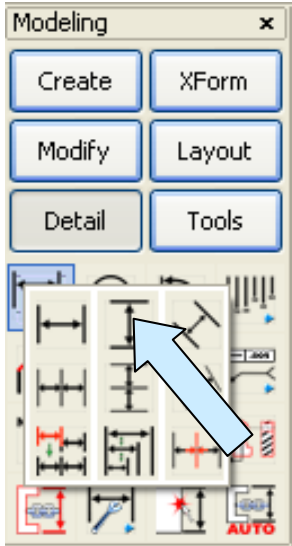
Using the Intrsct Option, click on the left vertical edge of the plate and the bottom edge of the plate. Then, click on the right vertical edge of the plate and the bottom of the plate.



Move the cursor downward and a ghost dimension follows. Click to set the dimension position.

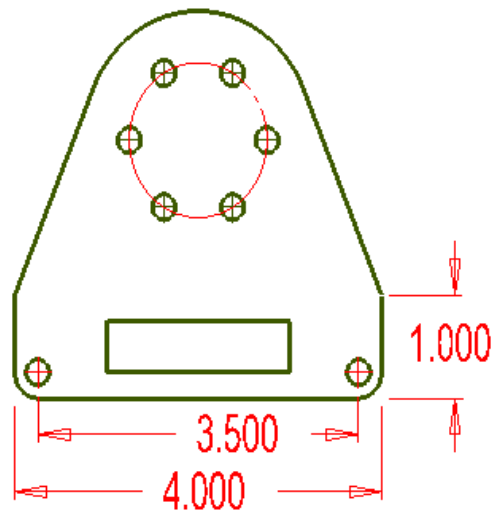


Using the same tool and the EndEnt Option, click on the bottom end of the vertical centerline in each of the small circles at the corners of the plate. Move the cursor downward and click to set this dimension.



Now, click on the VERTICAL LINEAR DIMENSION Icon.

Using the EndEnt Option, click on the top end of the right, vertical edge on the plate. Then, using the Intrset Option, click on the right, vertical edge and the bottom edge of the plate.



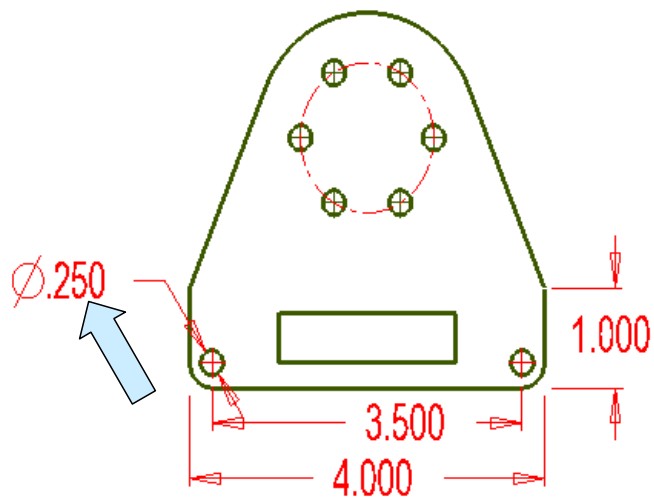
Move the cursor to the right and click to set the text.



Next, click on the REGULAR DIAMETER DIMENSION Icon.

Then, click on the small circle in the bottom left corner of the part.

Move the cursor to the left and up and click to set the dimension text.

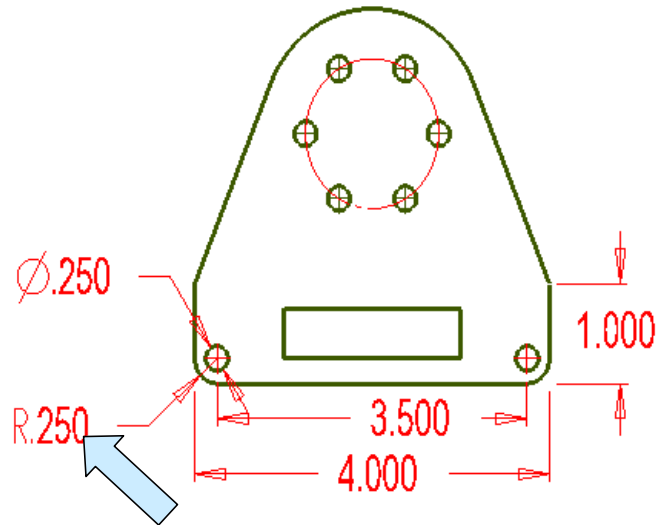




Now, click on the RADIAL DIMENSION Icon.

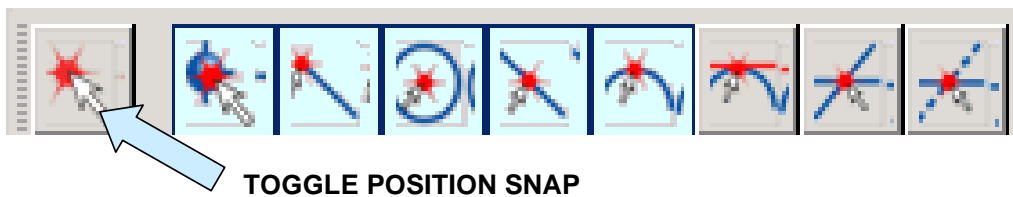
Then, click on the fillet at the bottom, left corner of the part.

Move the cursor down and to the left and click to set the text position.



Now we could continue to place dimensions on this drawing using the dedicated dimension tools. Instead, let's use the Quick Dimension Function to expedite the process.

We'll do the following steps with the Position Snap Function turned off.



Note: If the Position Snap Function is on you can also depress the CTRL Key while selecting to disable it. Conversely, if it is off you can depress the CTRL Key to temporarily enable it.



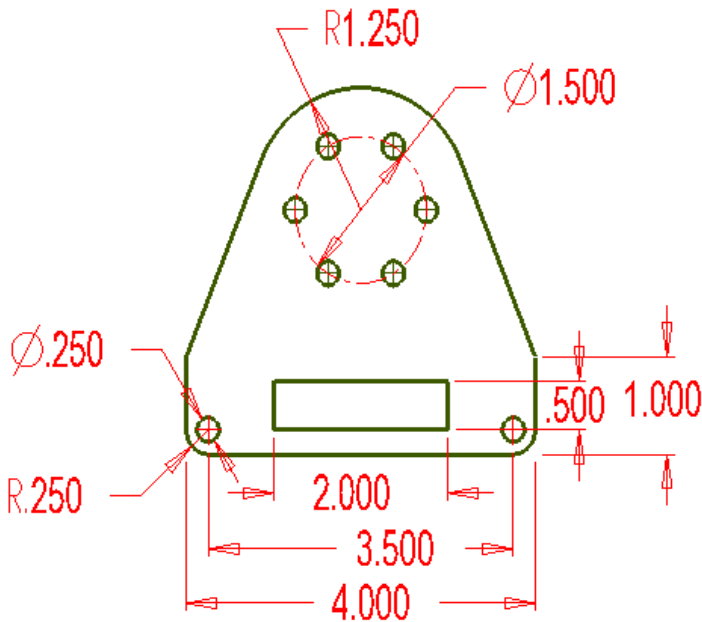
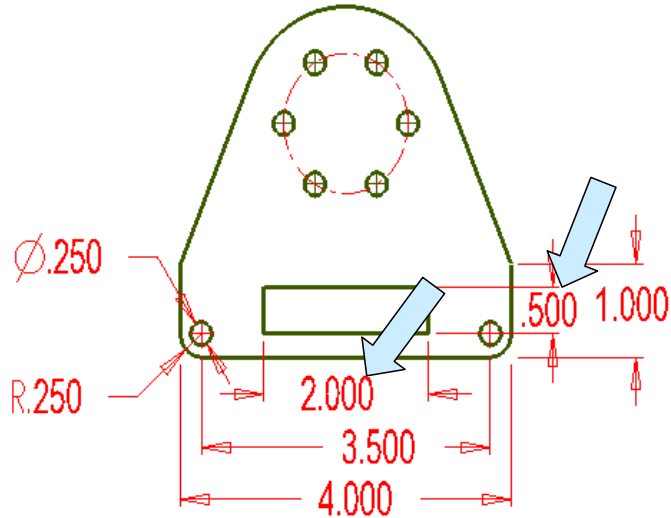
Click on the QUICK DIMENSION Icon.

Using the Cursor Option, click on the bottom edge of the small rectangle in the part and move the cursor downward.

Click to set the dimension text position.

Still using the Cursor Option, click on the right side of the small rectangle and move the cursor to the right. Click to set the dimension text.

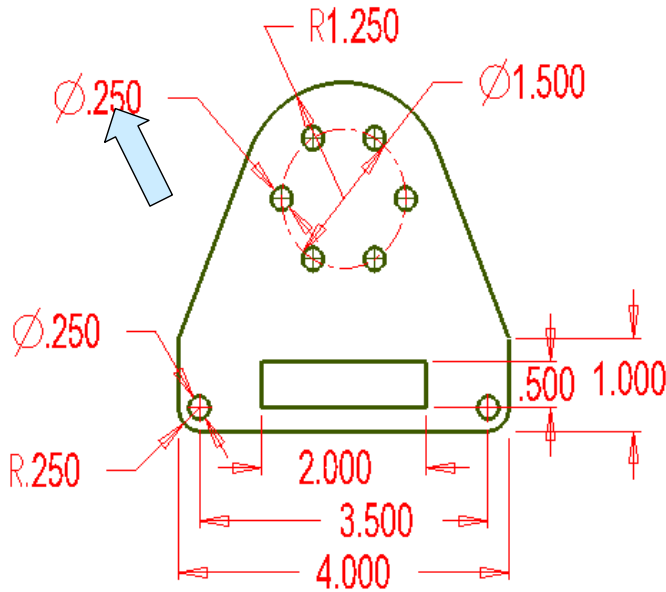
Notice that this same tool made both a horizontal and a vertical dimension with single picks!



Still using the Cursor Option, click on the bolt circle and place a diameter dimension.

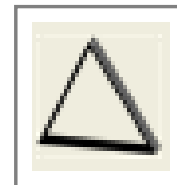
Then, click on the top arc of the part and place a radial dimension.

We'll see in a later lesson how we can use the Quick Dimension tool to place point to point dimensions also. (We just use the EndEnt and CtrMid Options to set the dimension ends and make two picks instead of one.)



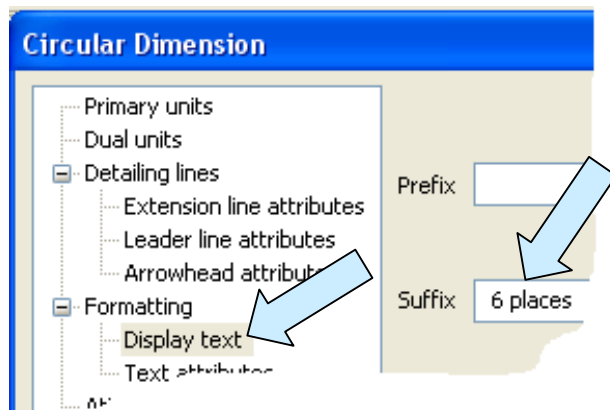
For our last task on this drawing, let's continue to use the Quick Dimension Tool to place a diameter dimension on one of the six small circles on the bolt circle.

Your screen should now look like this:



Let's suppose that we want to add the qualifier "6 places" to this dimension. To do this, click on the GENERIC EDIT Icon.

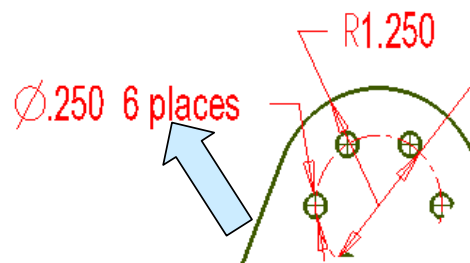
Then, click on the dimension.

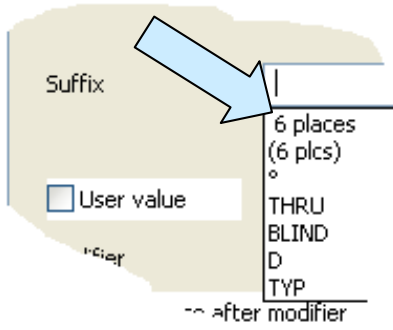


A large Dialog Box appears. Click on the Display Text Option on the right side of the Dialog Box.

Then, type "6 places" in the Suffix Field and click on the OK Button.

The qualifying phrase is now added to the dimension.





When you type a custom qualifier it is added to the pulldown list in the Dialog Box. You can then select it when editing other dimensions.

You will also notice a Symbols Button in the Dialog Box.

You can click on this to add standard symbols to a dimension qualifier.

