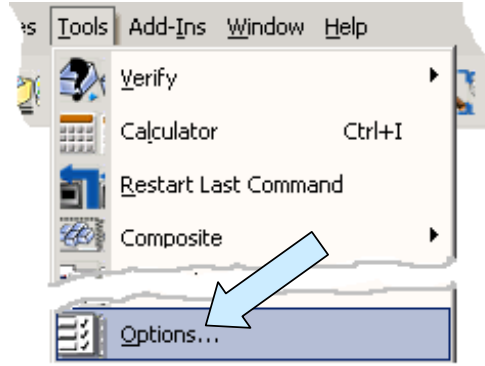
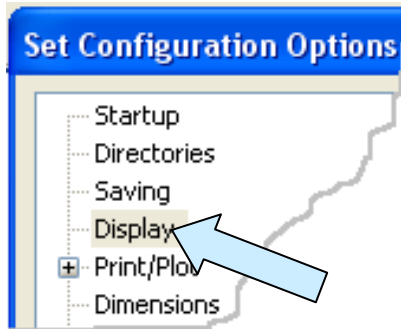


Q: I installed my KeyCreator and I get shattering of the display whenever I move a dialog box on the screen. What's wrong?

A: This is one of the most common tech support questions that comes up. A variant is that when you move the cursor to place geometry (like a rectangle) on the screen, the rectangle is displayed repeatedly like a series of overlapping images. Here's the most common cause and how to eliminate the problem.

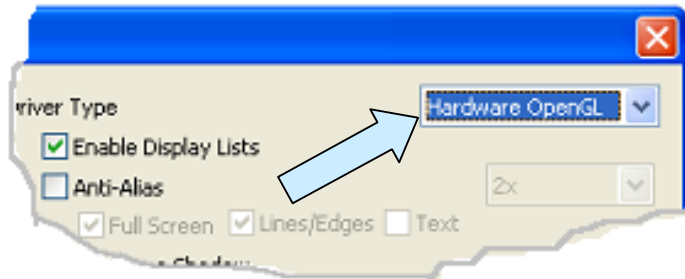


By default, KeyCreator installs with the display driver set to the Hardware Open GL setting. To see this setting, click on the TOOLS Pulldown and then on OPTIONS.

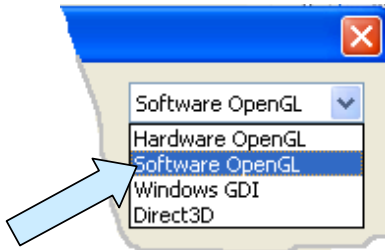


Next, click on the DISPLAY Option in the list at the left side of the Dialog Box.

You will see the current driver type displayed at the top, right side of the Dialog Box.



In many cases, using the Hardware OpenGL setting will create the display problems that you are having. (For example, out of over a dozen computers in my training center, only two can run KeyCreator well with the Hardware OpenGL setting. Click on the Pulldown and select the Software OpenGL Option.



Then click on the OK Button. Close KeyCreator to enable the new setting and then launch KeyCreator again. In most cases this will solve your problem.