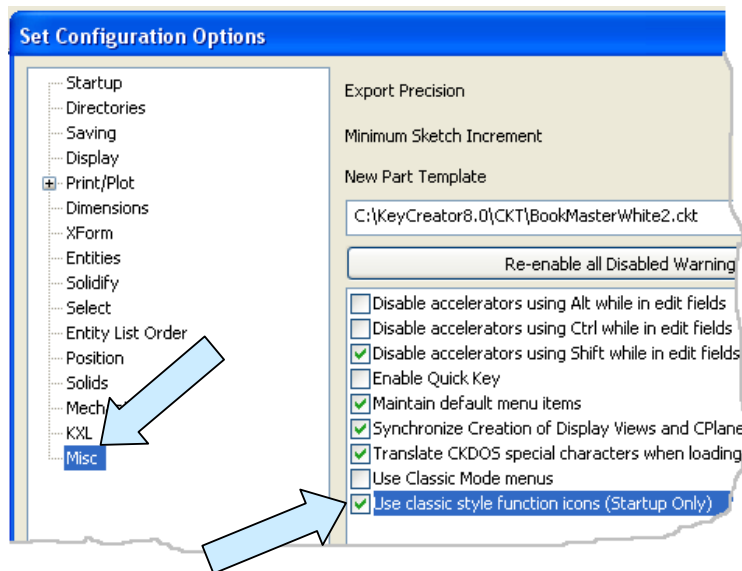
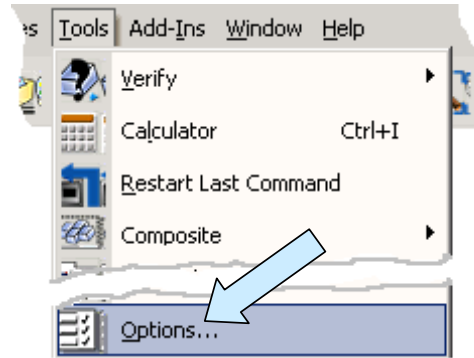


Q: Hi Doctor Walt! I'm an old rat like you and I don't like these new-fangled Icons. How do I get the old Icons to work in KeyCreator?

A: For those of you who prefer the old Icons, here's how to make them the default in KeyCreator.

Click on the TOOLS Pulldown Menu and then on OPTIONS.



A large Dialog Box appears.

Click on the Misc Option at the bottom of the list on the left side of the box.

Then, click to place a check on the "Use classic style function Icons" Option in the field to the right.

Then, click on the OK Button

Nothing happens yet. You have to exit KeyCreator and then restart it for the change to take effect. You will continue to get the old Icons each time you boot KeyCreator as long as this option is checked.